

UGSA**UGSA AD 2.1 Aerodrome location indicator and name**

UGSA - NATAKHTARI

UGSA AD 2.2 Aerodrome geographical and administrative data

1	ARP coordinates and site at AD	415514N 0444310E 5 M from Hangar for visiting aircraft
2	Direction and distance from (city)	8 KM from Mtskheta center
3	Elevation / Reference temperature	1687 FT / 29°C
4	Geoid undulation at AD ELEV PSN	50 FT
5	MAG VAR / Annual change	7°E (2021) / NIL
6	Aerodrome operator	SERVICEAIR LTD
	Address	Natakhtari 0038 MTSKHETA GEORGIA
	Telephone	+995322428428, +995599659090
	Telefax	NIL
	AFS	NIL
	E-mail	admin@serviceair.ge, info@serviceair.ge
	Website	NIL
7	Type of traffic permitted (IFR/VFR)	VFR
8	Remarks	NIL

UGSA AD 2.3 Operational hours

1	AD Operator	MON-FRI from 05:30 to 14:00; SAT-SUN On Request
2	Customs and immigration	NIL
3	Health and sanitation	On Request
4	AIS Briefing Office	NIL
5	ATS Reporting Office (ARO)	NIL
6	MET Briefing Office	NIL
7	ATS	NIL
8	Fuelling	On Request
9	Handling	On Request
10	Security	On Request
11	De-icing	NIL
12	Remarks	NIL

UGSA AD 2.4 Handling services and facilities

1	Cargo-handling facilities	NIL
2	Fuel/oil types	Fuel: TS1 (GOST 10227) Oil: NIL
3	Fuelling facilities / capacity	Tank capacity of 7500 liters, flow rate 400 liters/minute Tel: (+995 599) 65 90 95 Email: admin@serviceair.ge
4	De-icing facilities	NIL
5	Hangar space for visiting aircraft	Available. There are 4 hangars with a total area of 2300 sq.m without heating
6	Repair facilities for visiting aircraft	Available minor repairs for ultra light and light aircraft
7	Remarks	NIL

UGSA AD 2.5 Passenger facilities

1	Hotels	Available in the city
2	Restaurants	Available in the city and at AD
3	Transportation	Taxis from AD
4	Medical Facilities	First medical aid at AD and hospital in the city
5	Bank and Post Office	Available in the city
6	Tourist Office	Available at AD
7	Remarks	NIL

UGSA AD 2.6 Rescue and fire fighting services

1	AD category for fire fighting	CAT 2
2	Rescue equipment	Available 1 Fire truck
3	Capability for removal of disabled aircraft	Available, L410
4	Remarks	Contact information of the aerodrome coordinator for removal of disabled aircraft: Tel: +995599659095 E-mail: admin@serviceair.ge

UGSA AD 2.7 Seasonal availability - clearing

1	Types of clearing equipment	NIL
2	Clearance priorities	1. RWY 10/28 and TWY 2. Apron 3. Access roads to the Airport Rescue Service
3	Remarks	Aerodrome surface cleaning when necessary. The snow plan and friction measuring details see in section AD 1.2.2

UGSA AD 2.8 Aprons, taxiways and check locations/positions data

1	Apron designation, surface and strength of aprons	APRON: Concrete, PCN 12/R/B/W/T
2	Taxiway designation, width, surface and strength	TWY A: 10 M, Concrete, PCN 12/R/B/W/T
3	Altimeter checkpoint location and elevation	Apron Elevation 1688 FT
4	VOR checkpoints	NIL
5	INS checkpoints	NIL
6	Remarks	NIL

UGSA AD 2.9 Surface movement guidance and control system and markings

1	Use of aircraft stand ID signs, TWY guide lines and visual docking/parking guidance system of aircraft stands	NIL
2	RWY and TWY markings and LGT	RWY: Designation, THR, centre line TWY: Centre line, holding position
3	Stop bars and RWY guard lights	NIL
4	Other RWY protection measures	NIL
5	Remarks	NIL

UGSA AD 2.10 Aerodrome obstacles

1 Obstacles in Area 2

Designator	Type	Coordinates	ELEV/HGT	Markings / LGT type, colour	Remarks
1	2	3	4	5	6
UGSA01	Pole	415507.4N 0444315.6E	1805/- FT	MARKED	Mast
UGSA02	Pole	415512.0N 0444317.1E	1810/- FT	MARKED	Mast

2 Obstacles in Area 3

Designator	Type	Coordinates	ELEV/HGT	Markings / LGT type, colour	Remarks
1	2	3	4	5	6
UGSA03	Pole	415513.5N 0444307.5E	1760.0/- FT	MARKED	Wind Direction Indicator
UGSA04	Pole	415509.8N 0444307.3E	1764.0/- FT	NIL	Mast
UGSA05	Pole	415510.3N 0444305.1E	1765.0/- FT	NIL	Mast
UGSA06	Pole	415510.9N 0444303.0E	1764.0/- FT	NIL	Mast
UGSA07	Pole	415511.5N 0444300.9E	1763.0/- FT	NIL	Mast

Designator	Type	Coordinates	ELEV/HGT	Markings / LGT type, colour	Remarks
1	2	3	4	5	6
UGSA08	Pole	415512.0N 0444258.9E	1763.0/- FT	NIL	Mast
UGSA09	Pole	415512.6N 0444256.9E	1763.0/- FT	NIL	Mast
UGSA10	Pole	415513.1N 0444254.9E	1763.0/- FT	NIL	Mast
UGSA11	Pole	415513.7N 0444253.0E	1763.0/- FT	NIL	Mast
UGSA12	Pole	415514.2N 0444251.1E	1759.0/- FT	NIL	Mast
UGSA13	Pole	415514.7N 0444249.1E	1761.0/- FT	NIL	Mast
UGSA14	Pole	415515.3N 0444247.2E	1760.0/- FT	NIL	Mast
UGSA15	Pole	415515.7N 0444245.2E	1760.0/- FT	NIL	Mast
UGSA16	Pole	415516.3N 0444243.5E	1759.0/- FT	NIL	Mast
UGSA17	Pole	415516.9N 0444241.8E	1757.0/- FT	NIL	Mast
UGSA18	Pole	415520.2N 0444243.1E	1764.0/- FT	NIL	Mast
UGSA19	Pole	415513.4N 0444307.9E	1764.0/- FT	NIL	Mast
UGSA20	Building	415513.3N 0444308.1E	1739.0/- FT	NIL	Bower
UGSA21	Building	415514.0N 0444309.7E	1767.0/- FT	NIL	Hangar
UGSA22	Tank	415512.3N 0444312.2E	1755.0/- FT	NIL	NIL

UGSA AD 2.11 Meteorological information provided

1	Associated MET Office	NIL
2	Hours of service	NIL
	MET Office outside hours	NIL
3	Office responsible for TAF preparation	NIL
	Periods of validity	NIL
4	Trend forecast	NIL
	Interval of issuance	NIL
5	Briefing/consultation provided	NIL
6	Flight documentation	NIL
	Language(s) used	NIL
7	Charts and other information available for briefing or consultation	NIL
8	Supplementary equipment available for providing information	NIL
9	ATS units provided with information	NIL
10	Additional information (limitation of service, etc.)	NIL

UGSA AD 2.12 Runway physical characteristics

RWY Designations	TRUE BRG	Dimensions of RWY (M)	Strength (PCR) and surface of RWY and SWY	THR coordinates, RWY end coordinates, THR geoid undulation	THR elevation and highest elevation of TDZ of precision APP RWY
1	2	3	4	5	6
10	109.30°	948 x 18	12/R/B/W/T Concrete	THR: 415521.77N 0444230.76E END: 415511.63N 0444309.61E GUND: NIL	THR: 1677 FT
28	289.30°			THR: 415515.13N 0444256.19E END: 415521.77N 0444230.76E GUND: NIL	THR: 1683 FT

RWY Designations	Slope of RWY - SWY	SWY dimensions (M)	CWY dimensions (M)	Strip dimensions (M)	RESA dimensions (M)
1	7	8	9	10	11
10	0.34%	NIL	NIL	1008 x 60	NIL
28	-0.34%	NIL	NIL		NIL

RWY Designations	Location and Description of Arresting System	OFZ	Remarks
1	12	13	14
10	NIL	NIL	NIL
28	NIL	NIL	NIL

UGSA AD 2.13 Declared distances

RWY Designator	TORA (M)	TODA (M)	ASDA (M)	LDA (M)	Remarks
1	2	3	4	5	6
10	620	620	620	948	NIL
28	948	948	948	620	NIL

UGSA AD 2.14 Approach and runway lighting

RWY Designator	APCH LGT type, LEN, INTST	THR LGT, colour, WBAR	VASIS (MEHT) PAPI	TDZ LGT LEN	RWY Centre Line LGT Length, spacing, colour, INTST
1	2	3	4	5	6
10	NIL	NIL	NIL	NIL	NIL
28	NIL	NIL	NIL	NIL	NIL

RWY Designator	RWY edge LGT LEN, spacing, colour, INTST	RWY End LGT colour, WBAR	SWY LGT LEN, colour	Remarks
1	7	8	9	10
10	NIL	NIL	NIL	NIL
28	NIL	NIL	NIL	NIL

UGSA AD 2.15 Other lighting and secondary power supply

1	ABN/IBN location, characteristics and hours of operation	ABN: NIL IBN: NIL
2	LDI location and LGT Anemometer location and LGT	NIL NIL
3	TWY edge and centre line lighting	NIL
4	Secondary power supply/switch-over time	NIL
5	Remarks	NIL

UGSA AD 2.16 Helicopter landing area

1	Coordinates TLOF or THR of FATO Geoid undulation	NIL
2	TLOF and/or FATO elevation M/FT	NIL
3	TLOF and FATO area dimensions, surface, strength, marking	NIL
4	True BRG of FATO	NIL
5	Declared distance available	NIL
6	APP and FATO lighting	NIL

7	Remarks	NIL
---	---------	-----

UGSA AD 2.17 Air traffic services airspace

1	Designation and lateral limits	NATAKHTARI ATZ Circle: radius 2 NM, centred at: 415513N 0444309E
2	Vertical limits	GND to 1000 FT AGL
3	Airspace classification	G
4	ATS unit call sign Language(s)	NIL
5	Transition altitude	NIL
6	Hours of applicability	NIL
7	Remarks	NIL

UGSA AD 2.18 Air traffic services communication facilities

NIL

UGSA AD 2.19 Radio navigation and landing aids

NIL

UGSA AD 2.20 Local aerodrome regulations

1 Airport regulations

At Natakhtari Airport a number of local regulations apply, which are collected in manuals that are available at the Passenger Terminal Building. These manuals include the following:

- information about aircraft stands;
- information about taxiing from aircraft stands including taxi clearance and engine start-up;
- marshaller assistance;
- engine start-up and use of auxiliary power unit (APU);
- precautions during extreme weather conditions.

A written form of "Local Regulations" may be requested from:

LTD "ServiceAir"
Head Office
Natakhtari, Mtskheta 0038
Georgia
E-mail: admin@serviceair.ge

2 Taxiing to and from stands. Parking on apron and in hangars. Exploitation during winter conditions

Taxiing shall be performed after supervisor's permission on frequency 131.750 MHz (call sign "Natakhtari"), and parking on apron and in hangars are guided by a marshaller on the stand.

During winter conditions areas on apron and taxiway are marked by visual signs. Speed of taxiing on apron or taxiway shall not exceed 5 km/h.

3 Removal of disabled aircraft from runway

When an aircraft is wrecked on a runway, it is the duty of the owner or user of such aircraft to have it removed as soon as possible. If a wrecked aircraft is not removed from the runway as quickly as possible by the owner or user, the aircraft will be removed by the aerodrome authority at the expense of the owner or user.

UGSA AD 2.21 Noise abatement procedures

NIL

UGSA AD 2.22 Flight procedures

Under development

UGSA AD 2.23 Additional information

NIL

UGSA AD 2.24 Charts related to an aerodrome

Chart Name	Page
Aerodrome chart - ICAO	AD 2.UGSA-ADC
Visual approach chart - ICAO	AD 2.UGSA-VAC
* the chart contains a text page	

UGSA AD 2.25 Visual segment surface (VSS) penetration

To be developed.

AERODROME CHART-ICAO

NATAKHTARI (UGSA)

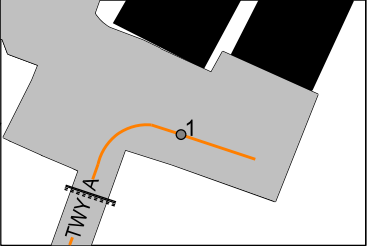
41°55'14"N
044°43'10"E
ELEV 1687'

NATAKHTARI
Supervisor 131.750

RWY	DIRECTION	THR	BEARING STRENGTH
10	102°	41°55'22"N 044°42'31"E	PCN 12/R/B/W/T RWY, TWY and apron
28	282°	41°55'15"N 044°42'56"E	

LEGEND	
AIRCRAFT STAND	●1
RWY-HOLDING POSITION MARKING PATTERN A	

INS COORDINATES FOR AIRCRAFT STANDS	
POS.	COORDINATES
1	41°55'13.00"N 044°43'10.67"E



ELEV IN FEET
DIST IN M
BRG ARE MAG

VAR 7° E-2021

TERMINAL BUILDING
TWR

DTHR
ELEV 1683'

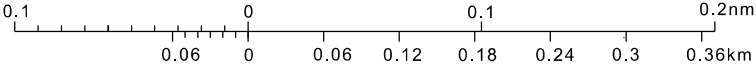
APRON

APRON
ELEV 1688'

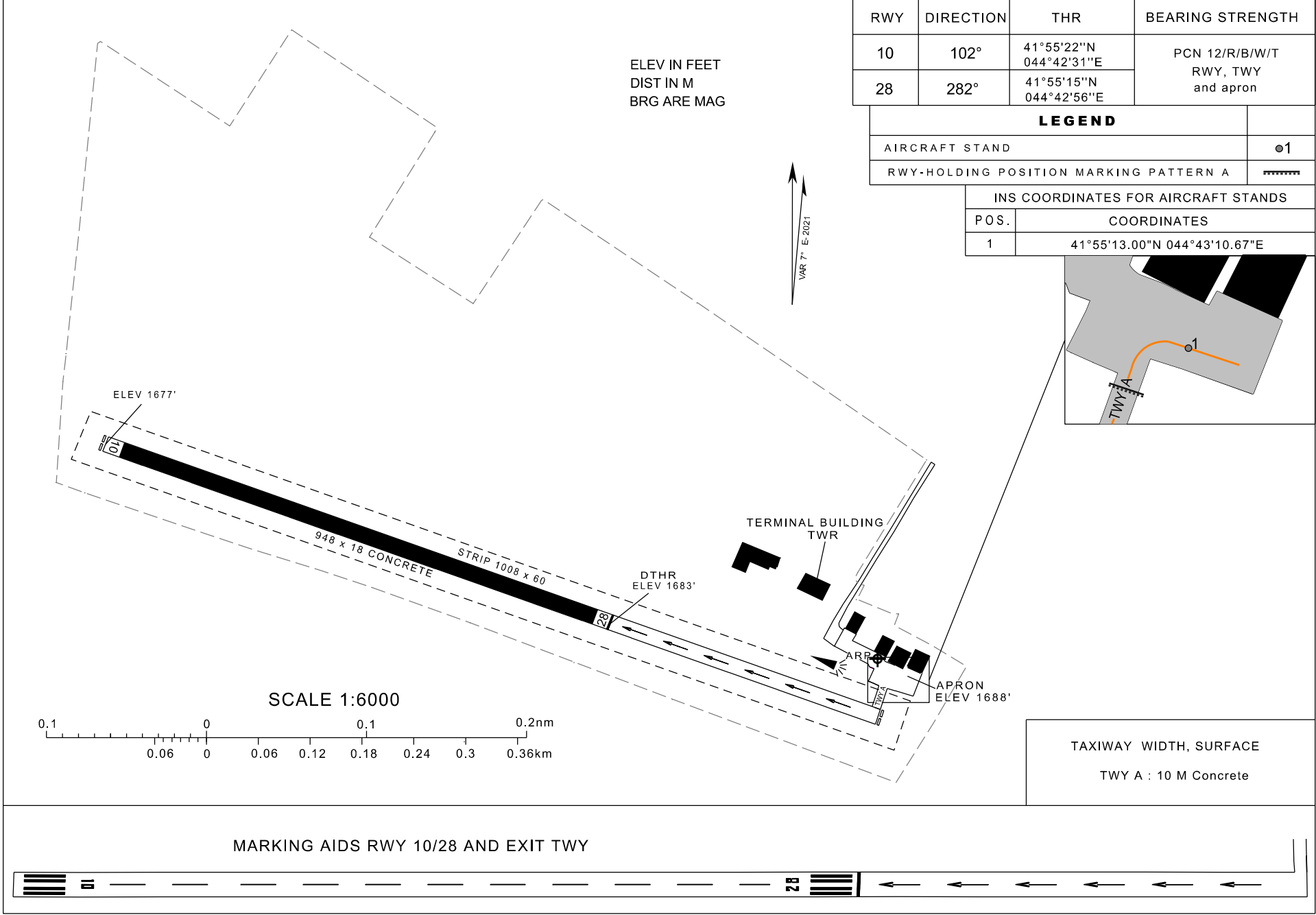
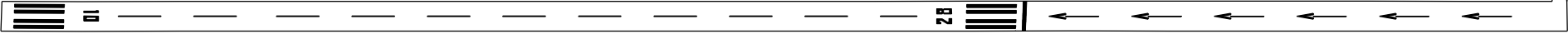
TAXIWAY WIDTH, SURFACE

TWY A : 10 M Concrete

SCALE 1:6000



MARKING AIDS RWY 10/28 AND EXIT TWY



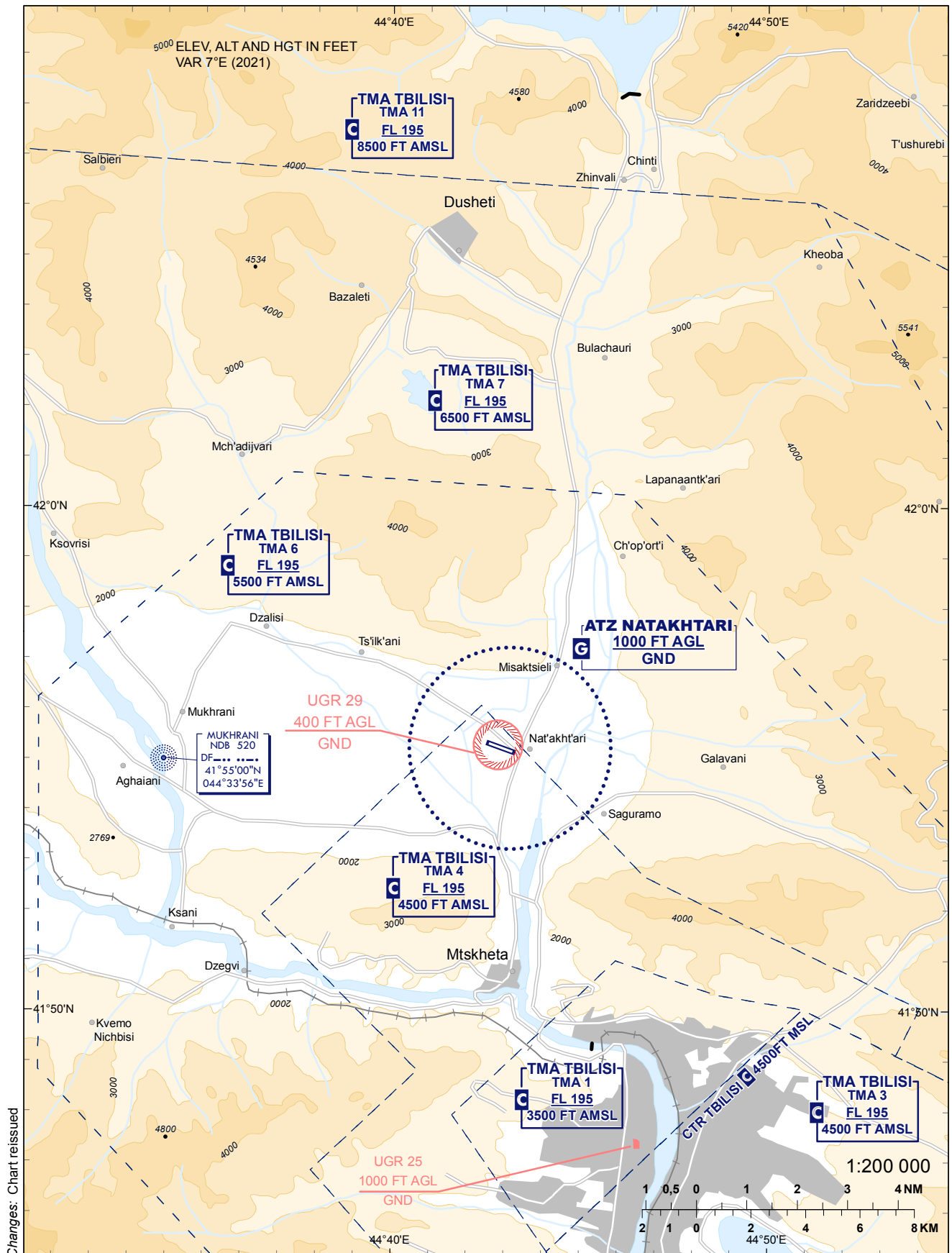
PAGE INTENTIONALLY LEFT BLANK

VISUAL APPROACH CHART - ICAO

NATAKHTARI (UGSA)

AERODROME ELEV. 1687'

NATAKHTARI 131.750



PAGE INTENTIONALLY LEFT BLANK